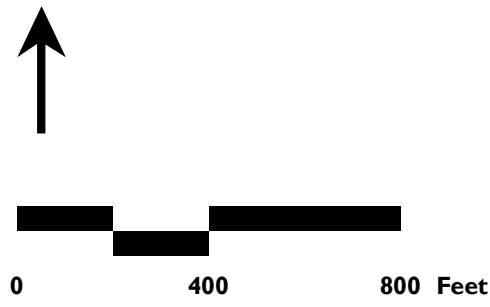
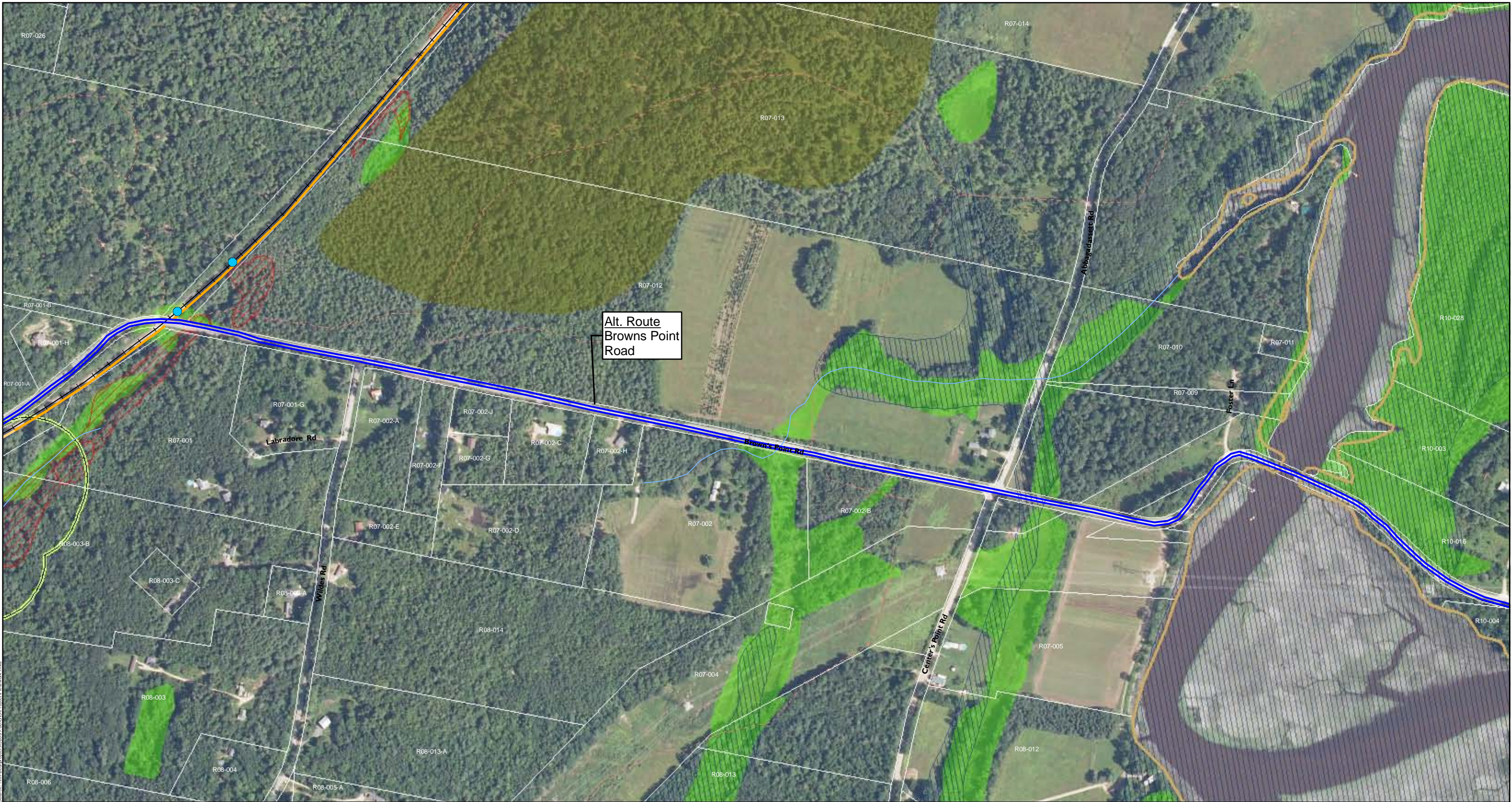


**Legend**

Alternate Route	Typical Trail Sections	Mile Post	Field Identified Potential Vernal Pool	Deer Wintering Area
Single Track Section	Normal Path Typical	Stone Monuments	MEIFW Potential Vernal Pool	FEMA 100-Yr Flood
Dual Track Section	Normal Fill Typical	Other Trails	NWI Wetland Boundary	Conserved Land
Bridge Crossing	Ledge A Typical	Culvert	Verified Wetland Boundary	Streams (MaineGIS)
	Ledge B Typical	Concrete/Stone Wall	Rare, Endangered, Threatened, Species	Town Boundary
	Extreme Fill Typical	Fence	Bald Eagle Nest Buffer	
	Proposed Bridge		Tidewater Mucket	
			Inland Waterfowl & Wading Bird Habitat	
			Tidal Waterfowl & Wading Bird Habitat	

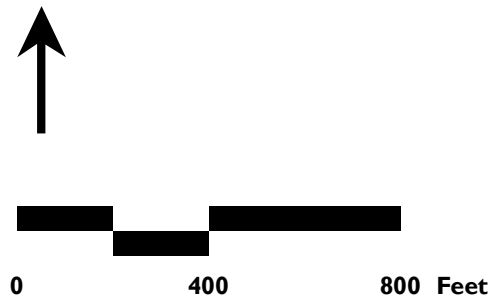


Sheet I  
**Merrymeeting Trail  
 Alternate Routes**  
 Browns Point Rd / Pork Point Rd  
 Bowdoinham, Maine  
 January, 2011

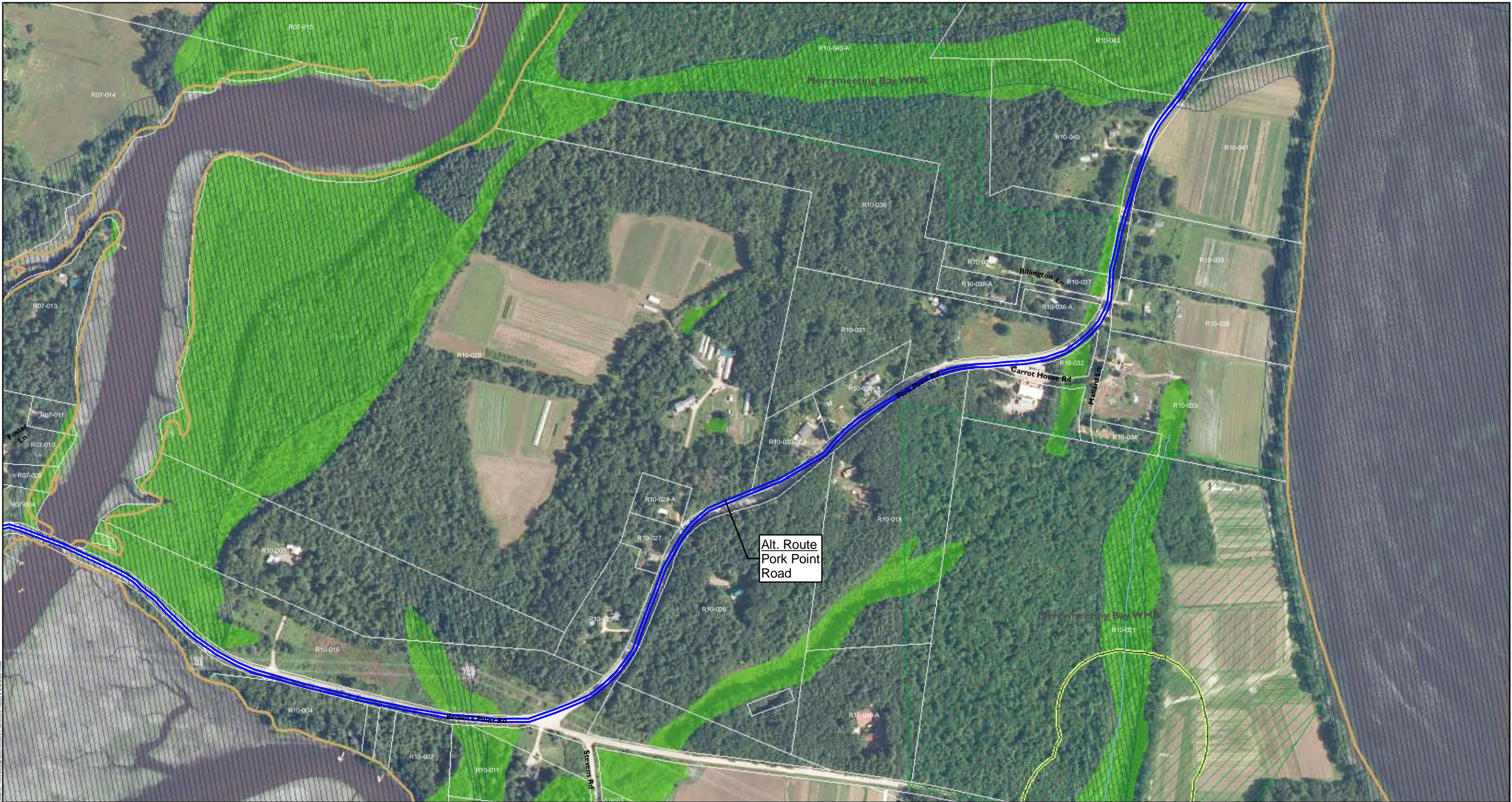


**Legend**

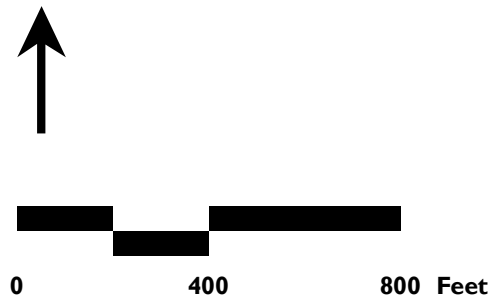
- |  |  |   |   |  |
|--|--|---|---|--|
| <ul style="list-style-type: none"> <li> Alternate Route</li> <li> Single Track Section</li> <li> Dual Track Section</li> <li> Bridge Crossing</li> </ul> | <ul style="list-style-type: none"> <li> Typical Trail Sections</li> <li> Normal Path Typical</li> <li> Normal Fill Typical</li> <li> Ledge A Typical</li> <li> Ledge B Typical</li> <li> Extreme Fill Typical</li> <li> Proposed Bridge</li> </ul> | <ul style="list-style-type: none"> <li> Mile Post</li> <li> Stone Monuments</li> <li> Other Trails</li> <li> Culvert</li> <li> Concrete/Stone Wall</li> <li> Fence</li> </ul> | <ul style="list-style-type: none"> <li> Field Identified Potential Vernal Pool</li> <li> MEIFW Potential Vernal Pool</li> <li> NWI Wetland Boundary</li> <li> Verified Wetland Boundary</li> <li> Rare, Endangered, Threatened, Species</li> <li> Bald Eagle Nest Buffer</li> <li> Tidewater Mucket</li> <li> Inland Waterfowl &amp; Wading Bird Habitat</li> <li> Tidal Waterfowl &amp; Wading Bird Habitat</li> </ul> | <ul style="list-style-type: none"> <li> Deer Wintering Area</li> <li> FEMA 100-Yr Flood</li> <li> Conserved Land</li> <li> Streams (MaineGIS)</li> <li> Town Boundary</li> </ul> |
|--|--|---|---|--|



Sheet 2  
**Merrymeeting Trail  
 Alternate Routes**  
 Browns Point Rd / Pork Point Rd  
 Bowdoinham, Maine  
 January, 2011



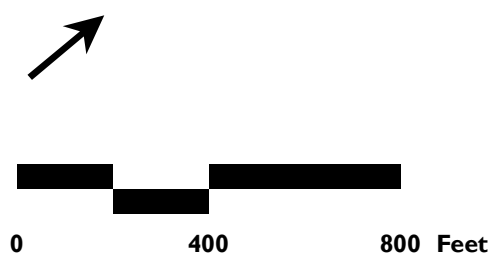
Alternate Route	Typical Trail Sections	Mile Post	Field Identified Potential Vernal Pool	Deer Wintering Area
Single Track Section	Normal Path Typical	Stone Monuments	MEIFW Potential Vernal Pool	FEMA 100-Yr Flood
Dual Track Section	Normal Fill Typical	Other Trails	NWI Wetland Boundary	Conserved Land
Bridge Crossing	Ledge A Typical	Culvert	Verified Wetland Boundary	Streams (MaineGIS)
	Ledge B Typical	Concrete/Stone Wall	Rare, Endangered, Threatened, Species	Town Boundary
	Extreme Fill Typical	Fence	Bald Eagle Nest Buffer	
	Proposed Bridge		Tidewater Mucket	
			Inland Waterfowl & Wading Bird Habitat	
			Tidal Waterfowl & Wading Bird Habitat	



Sheet 3  
**Merrymeeting Trail  
 Alternate Routes**  
 Browns Point Rd / Pork Point Rd  
 Bowdoinham, Maine  
 January, 2011



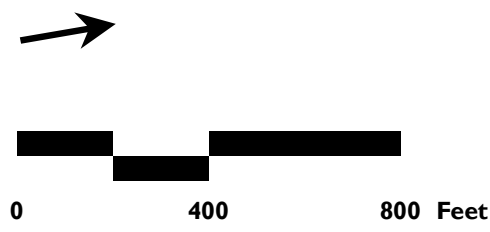
- Legend**
- |                      |                        |                     |  |                     |
|----------------------|------------------------|---------------------|--|---------------------|
| Alternate Route      | Typical Trail Sections | Mile Post           | Field Identified Potential Vernal Pool | Deer Wintering Area |
| Single Track Section | Normal Path Typical    | Stone Monuments     | MEIFW Potential Vernal Pool            | FEMA 100-Yr Flood   |
| Dual Track Section   | Normal Fill Typical    | Other Trails        | NWI Wetland Boundary                   | Conserved Land      |
| Bridge Crossing      | Ledge A Typical        | Culvert             | Verified Wetland Boundary              | Streams (MaineGIS)  |
|                      | Ledge B Typical        | Concrete/Stone Wall | Rare, Endangered, Threatened, Species  | Town Boundary       |
|                      | Extreme Fill Typical   | Fence               | Bald Eagle Nest Buffer                 |                     |
|                      | Proposed Bridge        |                     | Tidewater Mucket                       |                     |
|                      |                        |                     | Inland Waterfowl & Wading Bird Habitat |                     |
|                      |                        |                     | Tidal Waterfowl & Wading Bird Habitat  |                     |



Sheet 4  
**Merrymeeting Trail  
 Alternate Routes**  
 Browns Point Rd / Pork Point Rd  
 Bowdoinham, Maine  
 January, 2011



<b>Legend</b>				
Alternate Route	Typical Trail Sections	Mile Post	Field Identified Potential Vernal Pool	Deer Wintering Area
Single Track Section	Normal Path Typical	Stone Monuments	MEIFW Potential Vernal Pool	FEMA 100-Yr Flood
Dual Track Section	Normal Fill Typical	Other Trails	NWI Wetland Boundary	Conserved Land
Bridge Crossing	Ledge A Typical	Culvert	Verified Wetland Boundary	Streams (MaineGIS)
	Ledge B Typical	Concrete/Stone Wall	Rare, Endangered, Threatened, Species	Town Boundary
	Extreme Fill Typical	Fence	Bald Eagle Nest Buffer	
	Proposed Bridge		Tidewater Mucket	
			Inland Waterfowl & Wading Bird Habitat	
			Tidal Waterfowl & Wading Bird Habitat	



Sheet 5  
**Merrymeeting Trail  
 Alternate Routes**  
 Browns Point Rd / Pork Point Rd  
 Bowdoinham, Maine  
 January, 2011